



**Content of delivery:** 1x Heating Element IN-2904/5/7, 1x Quick Installation Guide

**INSTAR Deutschland GmbH** hereby ensures that you will not lose your warranty by installing this additional heater.

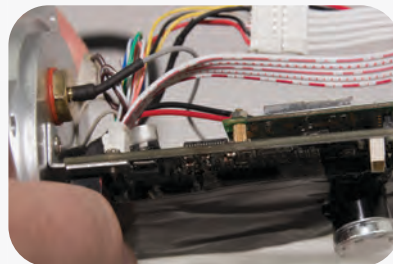
**ATTENTION:** Any damages caused by the user by faulty installation are excluded from the warranty.



**Step 1:** Remove the top cover by gently pulling it in the direction of the lense. Use an Allen Key to remove the 4 screws in the back plate of the camera.



**Step 2:** Unplug the 7-pin power cable connector from the mainboard. Now connect this cable with the corresponding connector from the heating element.



**Step 3:** Connect the other end of the cable from the heating element with the now vacant plug on the mainboard. Now carefully place the element in the lower part of the camera housing. The thermostat of the heating element has to point away from the mainboard.



**Step 4:** Place the back plate back onto the housing and ensure that the O-Ring (sealing the casing) is still in place. Fasten the back plate using the 4 screws from step 1 and slide the top cover back on.